



## **FOR LEASE**

**2665 North Air Fresno Drive**



- **High-quality office space located within close proximity to Fresno Airport**
  - **Convenient access to Highways 180 and 168**
  - **Office and Office/Warehouse space available**

**For Further Information Please Contact:**

**GARRY OWENS** CA DRE#:00800036

**JUSTIN TANCREDI** CA DRE#:01372876

**Russell G. Smith, Inc.**  
**8080 N. Palm Avenue, Suite 207**  
**(559) 449-2424**

*We assume the information contained to be correct. It is obtained from sources which we regard as reliable, but assume no liability for errors or omissions.*

## FOR LEASE

**LOCATION:** 2665 N. Air Fresno Drive, Fresno, CA

**PROJECT NAME:** Santa Barbara Plaza

**AREA:** Airport Business Park

**RENT:** \$1.05 per sq. foot per month

**AVAILABILITY:** Immediate.

**IMPROVEMENTS:** Negotiable

**SIGNAGE:** Signage is available on the building's fascia, at Tenant's expense.

**PARKING:** Excellent parking ratio; on-site and on-street parking readily available

<u>SUITE</u>	<u>SIZE</u>	<u>LAYOUT</u>	<u>RENT</u>
106	Approx. 2,885 sf.	Multiple Offices, improved work area.	\$3,029.25 per month*
107	Approx. 1,677 sf.	General office with approximately 1,000 sq. ft. of warehouse space.	\$1,760.85 per month*
108	Approx. 1,315 sf. ( <i>SUBLEASE</i> )	<u><i>Available on a Sublease basis.</i></u> General Office with approximately 800 sq. ft. of warehouse space	\$1,380.75 per month*
111	Approx. 1,848 sf.	General Office with private offices, conference room and restroom.	\$1,940.40 per month*

**Suite 106, 107 & 108 can be combined totaling up to approx. 5,877 square feet**

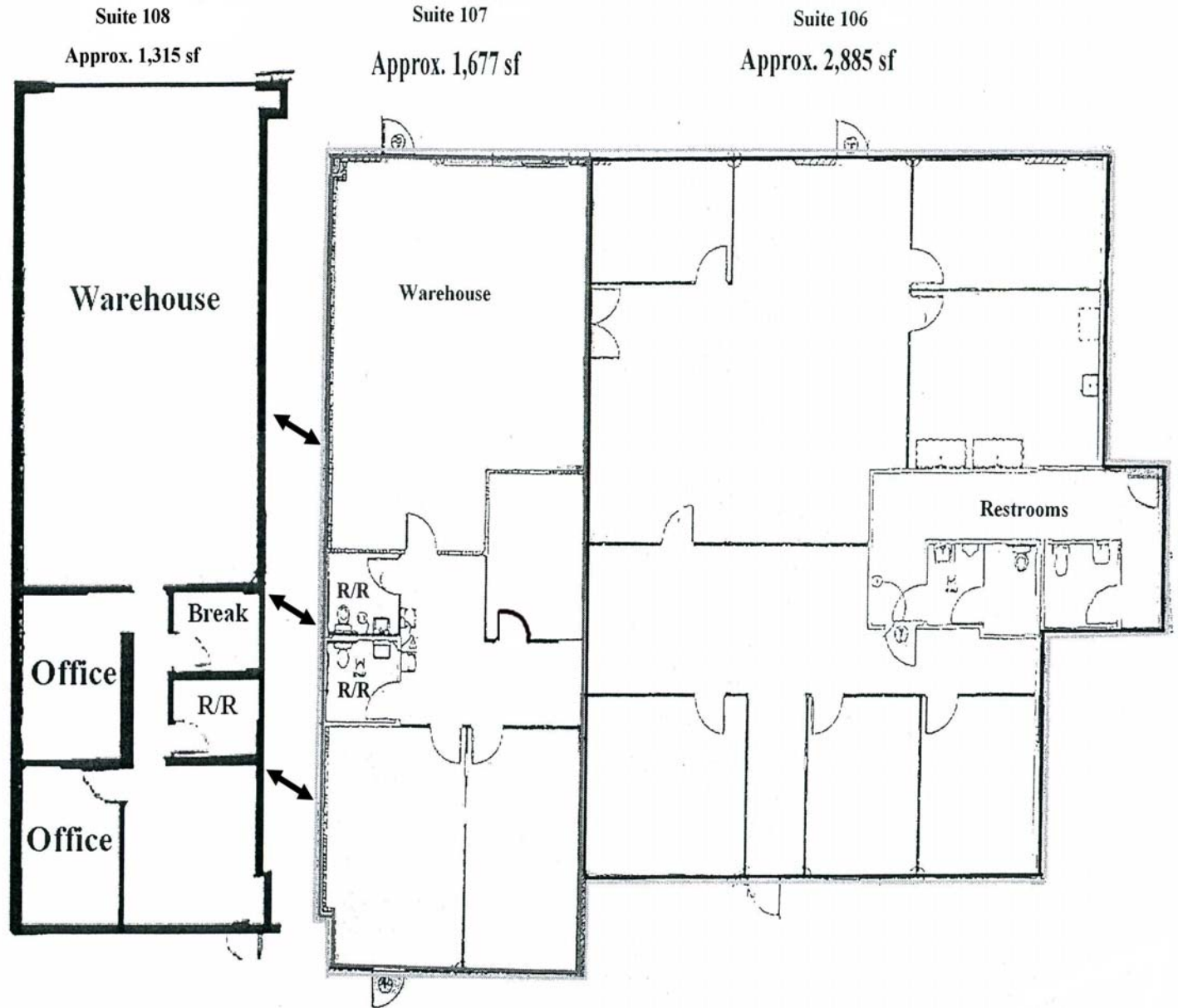
\* Tenant to pay utilities, janitorial services, and trash disposal.  
3% annual increases

**For Further Information Please Contact:**

**GARRY OWENS or  
JUSTIN R. TANCREDI**

**Russell G. Smith, Inc.  
8080 N. Palm Avenue, Suite 207  
(559) 449-2424**

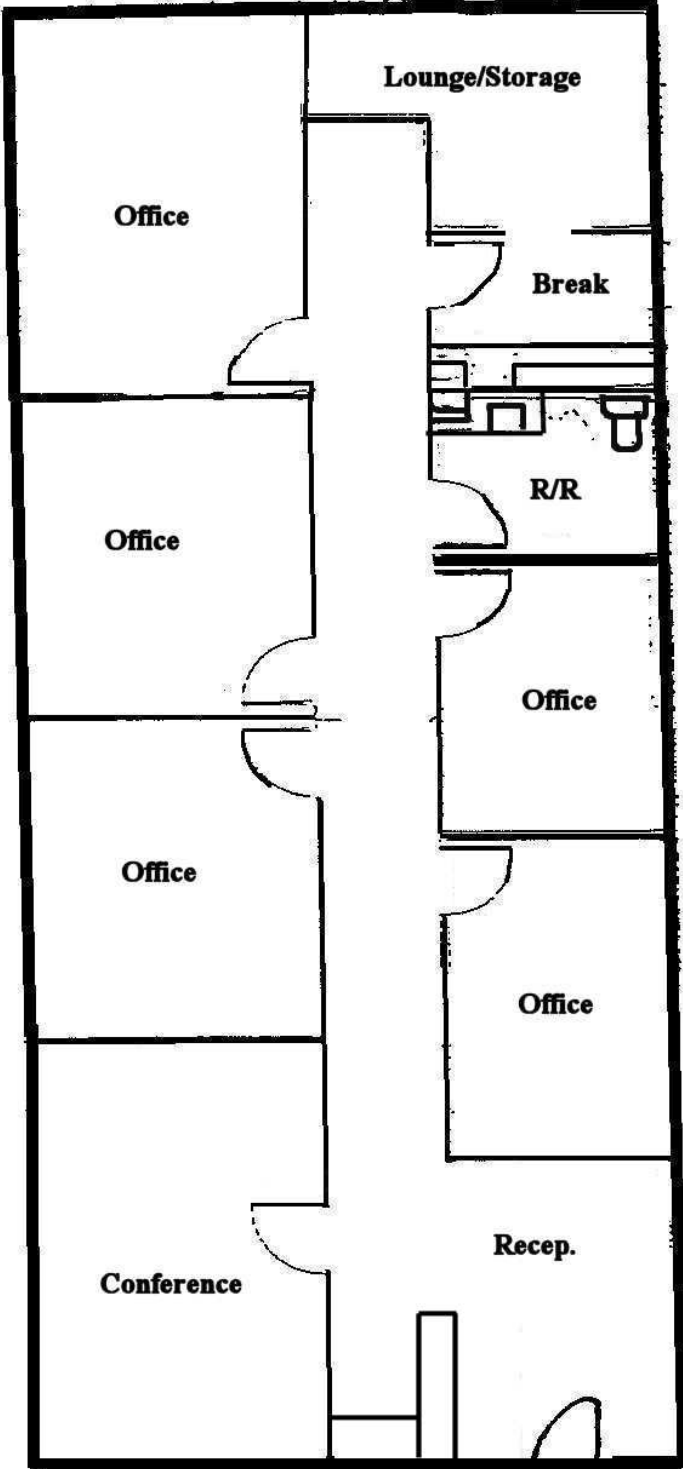
## FLOOR PLANS



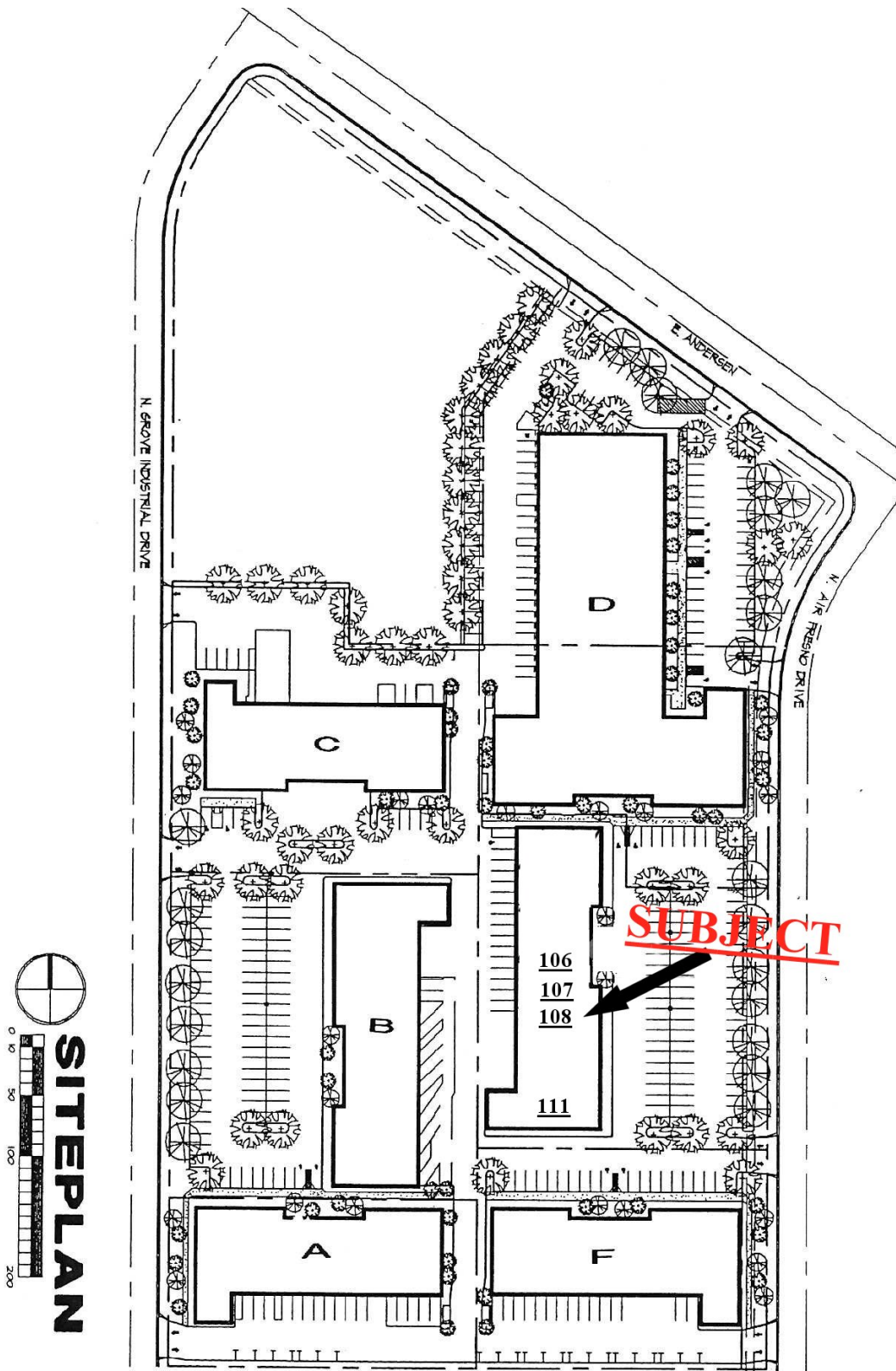
Suites may be combined, totaling up to approximately 5,877 sf

FLOOR PLAN

**SUITE 111**

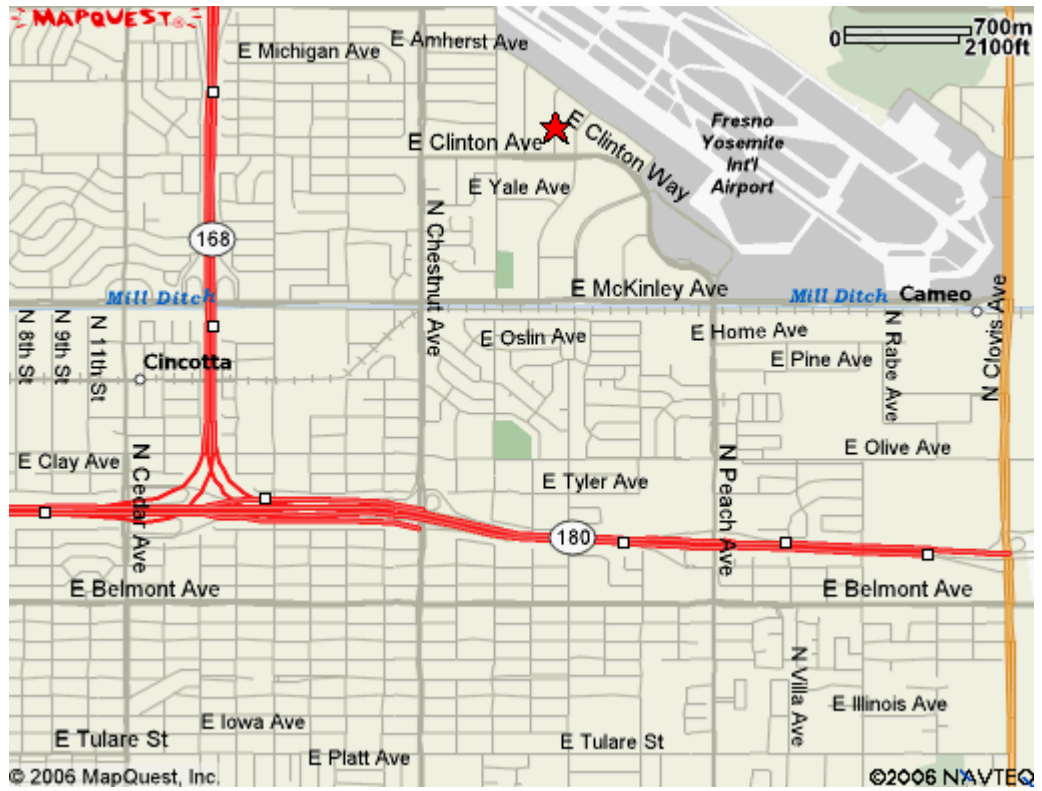


**SITE PLAN**



**SUBJECT**

**MAP VIEW**



**AERIAL VIEW**

